



GAT MONTHLY MEMBERSHIP PROGRESS REPORT

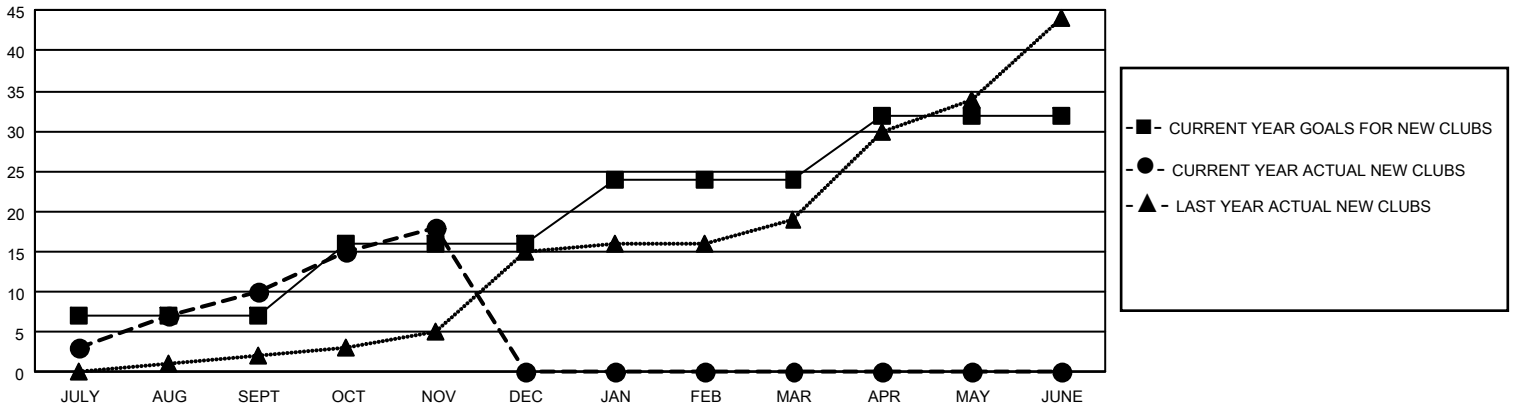
Results as of: 11/30/2020

GMT Constitutional Area 3, Group A

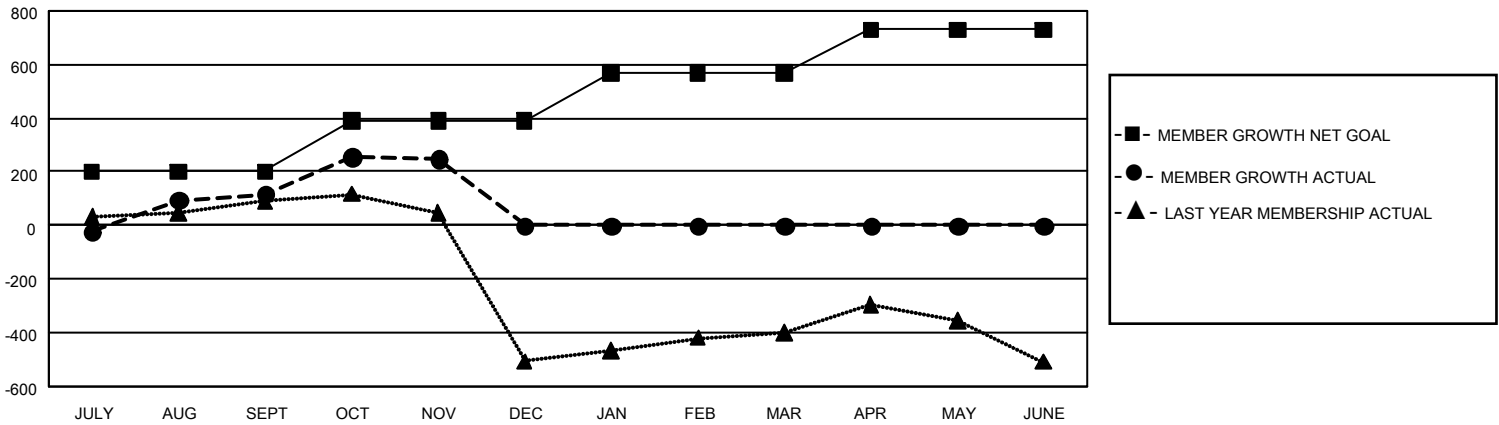
REPORT DOES NOT INCLUDE CLUBS IN UNDISTRICTED AREAS.

| Clubs | | | | Members | | | |
|-----------------------|---------------|-----------|---------------|-----------------------|------------------------|----------------------|--|
| RESULTS FOR 2020-2021 | | | | RESULTS FOR 2020-2021 | | | |
| QUARTER | NEW CLUB GOAL | NEW CLUBS | DROPPED CLUBS | QUARTER | MEMBER GROWTH NET GOAL | MEMBER GROWTH ACTUAL | DROPPED MEMBERS ACTUAL (including transfers) |
| JULY/AUG/SEPT | 21 | 10 | 5 | JULY/AUG/SEPT | 200 | 546 | 390 |
| OCT/NOV/DEC | 27 | 8 | 2 | OCT/NOV/DEC | 190 | 392 | 243 |
| JAN/FEB/MAR | 24 | 0 | 0 | JAN/FEB/MAR | 180 | 0 | 0 |
| APR/MAY/JUNE | 24 | 0 | 0 | APR/MAY/JUNE | 160 | 0 | 0 |

GOALS AND ACTUAL NEW CLUBS CUMULATIVE



GOALS AND ACTUAL MEMBERS CUMULATIVE



| | | | |
|---|--|---------------------------------|----------------|
| DROPPED CLUBS: 7 | 173 CLUBS OF 549 ADDED 1 OR MORE NEW MEMBERS | <u>GENDER DISTRIBUTION</u> | |
| <u>DROPPED MEMBERS</u> | | MALE | 6,168 (53.13%) |
| DECEASED | 68 | FEMALE | 5,442 (46.87%) |
| CLUB CANCELLED | 33 | TOTAL FAMILY UNIT MEMBERS 4,111 | |
| OTHER | 531 | | |
| TOTAL | 632 | | |
| CLICK HERE FOR CUMULATIVE MEMBERSHIP DATA | | | |
| | | | |